

FACT SHEET

Radisson Blu Hotel, Gdansk, Poland

WELCOME TO RADISSON BLU



HOTEL INFORMATION

With its stylish guest rooms and ideal location in the heart of the Main Town, Radisson Blu Hotel, Gdansk is the perfect place for all visitors, whether for business or pleasure. Located near the Artus Court, a symbol of the city's powerful reign during the 16th century, the hotel acts as an important meeting spot for local as well as international conventions and events.

LOCATION

Situated on The Royal Track, the Radisson Blu Hotel, Gdansk is just a few steps away from galleries, shopping and street theatrical events. The Gdansk Airport is only 15 kilometres away and the train station is an easy 20 minutes walking distance from the hotel. With abundant rail, road and sea links, Gdansk is well-connected to several major Scandinavian and Western European cities.

ROOMS

The Hotel has 134 rooms, with a choice of standards: Standard, Business Class, Deluxe, Suites and a luxurious Presidential Suite. The spacious interiors utilise natural colours that are sure to meet the expectations of the most demanding of guests. Every room has a comfortable bed, ergonomic working area, mini-bar, individual air-conditioning, coffee and tea making equipment, a large safe, satellite television and free broadband Internet access.

DINING

Guests and visitors alike can enjoy all-day dining at the elegant French brasserie de Verres en Vers. The Sure Bar next door is the ideal spot for a get-together with friends or a leisurely drink after a hard day's sightseeing. In the morning, at the restaurant, get the perfect start to the day with our Super Breakfast buffet, featuring a range of food items selected from the best of Continental, North European and American cuisine.

MEETINGS

Hotel offers two conference rooms with state-of-the-art equipment. They are located on the first floor and are perfect for conferences and business meetings. On the ground floor area of 165 m², and chic interior forming the perfect backdrop for seminars, balls, receptions and family events. This comfortable room boasts state-of-the-art audiovisual equipment, wireless Internet and individual air-conditioning. Rezydent has room for up to 220 people and can also be divided into or three smaller individual spaces thanks to a system of movable walls.

FACILITIES

Our recreation centre promises to reinvigorate you with its facilities which include a fully-equipped fitness and recreation facilities including sauna, steam room, gym and wellness zone. We also provide underground car parking facilities which houses 12 parking spaces. WiFi Internet access is available throughout all public areas.

Radisson Blu Hotel

Długi Targ 19/Powroźnicza, 80-828 Gdańsk

Tel. +48 58 325 4444

info.gdansk@radissonblu.com

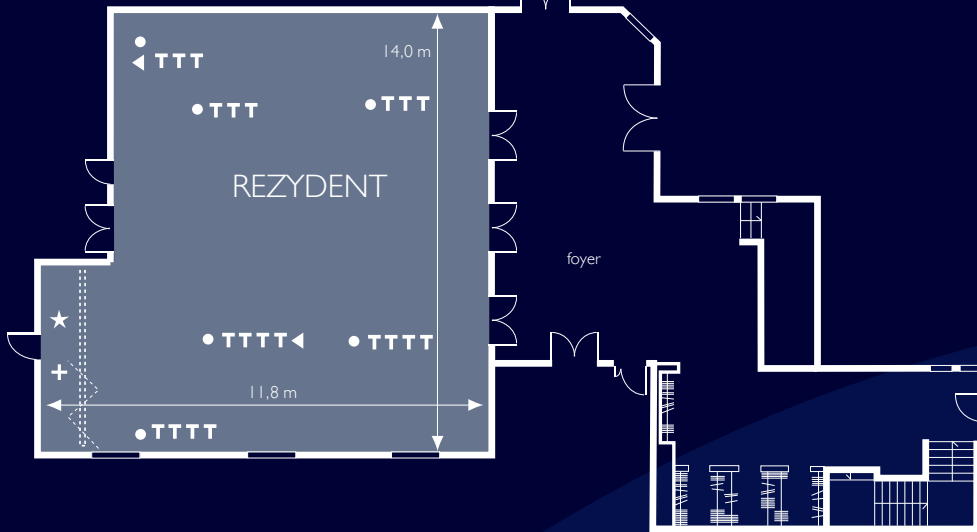
radissonblu.com

Radisson **BLU**
HOTEL, GDANSK

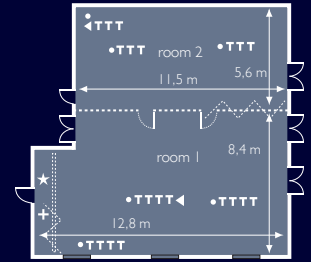
FACT SHEET

Radisson Blu Hotel, Gdańsk, Polska

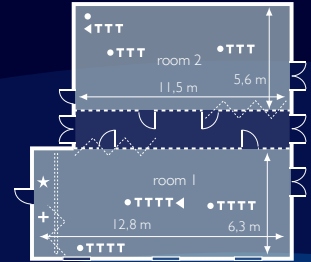
REZYDENT option I



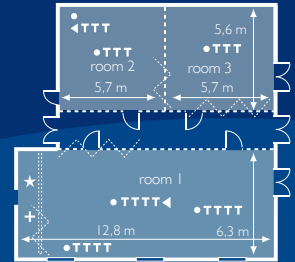
REZYDENT option II



REZYDENT option III



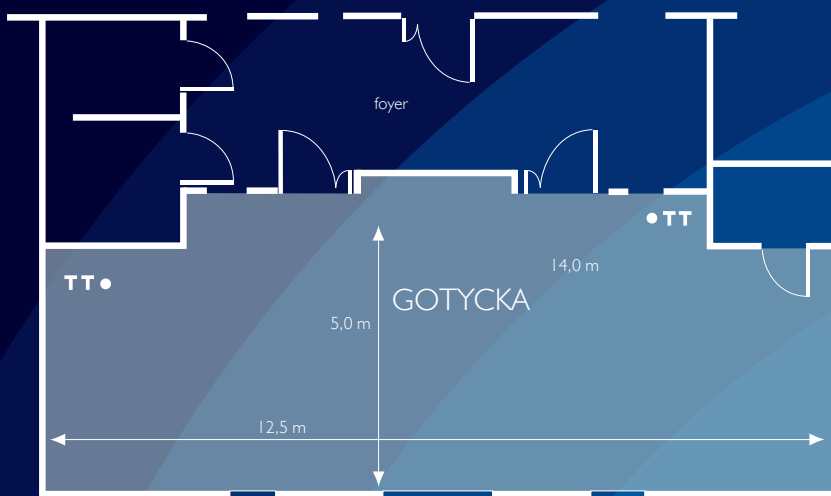
REZYDENT option IV



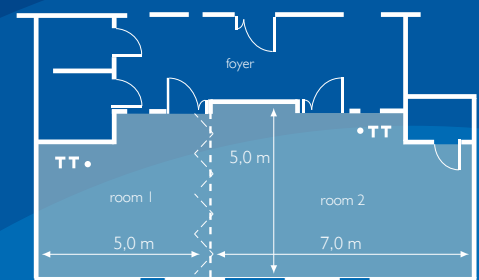
Key

- Double socket
- + 3 phase-power supply
- T Tele socket/ISDN line
- ★ Aerial socket
- ▲ Mic socket

GOTYCKA option I



GOTYCKA option II



MEETING ROOM CAPACITY

MEETING ROOM	Board-room	Cabaret	Classroom	Theatre style	U-shape	Dinner/Dinner Dance	Reception	Floor-to-ceiling height	Length and width	Floor area m ²	Door height	Door width	Power points	Lighting	Natural daylight	Telephone	
Rezydent	50	90	120	220	54	130/110	220	3,2	11,8x14,0	165	2,1	1,8	✓	✓	✓	✓	
option II	room 1	32	48	56	105	38	70/50	120	3,2	12,8x8,4	107	2,1	1,8	✓	✓	✓	
	room 2	32	34	30	74	32	50/30	80	3,2	11,5x5,6	64	2,1	1,8	✓	✓	–	✓
option III	room 1	32	42	50	80	36	70/40	100	3,2	12,8x6,3	81	2,1	1,8	✓	✓	✓	✓
	room 2	32	34	30	64	26	50/30	80	3,2	11,5x5,6	64	2,1	1,8	✓	✓	–	✓
option IV	room 1	32	42	50	80	36	70/40	100	3,2	12,8x6,3	81	2,1	1,8	✓	✓	✓	✓
	room 2	14	16	18	32	16	20/-	40	3,2	5,7x5,6	32	2,1	1,8	✓	✓	–	✓
	room 3	14	16	18	32	16	20/-	40	3,2	5,7x5,6	32	2,1	1,8	✓	✓	–	✓
Gotycka	30	24	32	60	28	30/-	80	2,5	12,5x5	62,5	2,1	1,5	✓	✓	✓	✓	
option II	room 1	10	14	14	25	10	18/-	30	2,5	5x5	25	2,1	1,5	✓	✓	✓	✓
	room 2	15	20	20	35	12	25/-	40	2,5	7x5	35	2,1	1,5	✓	✓	✓	✓
Prefunction area	length	width	m ²														
	11	8	80														