

- TRAVELLING BY CAR:**
 From all directions, change from the A1 onto the A5 in the direction of the Airport at the 'Zürich Nord' intersection. At the 'Flughafen' / Airport exit, leave the A51 and follow the signs to the multi-storey car parks (Parkhaus). Parkhaus 1 is located right next to the hotel.
- TRAVELLING BY RAIL:**
 The journey from Zürich Main Railway Station to Zürich Flughafen / Zürich Airport takes 10 minutes by S-Bahn (S2, S16) or train. The hotel is located a few minutes walking distance from the station.
- TRAVELLING BY AIR:**
 The hotel is located directly in Zürich Airport, opposite the terminals (arrivals level).

Radisson Blu Hotel, Zurich Airport

MEETING PLANNER



Radisson Blu Hotel, Zurich Airport
 P.O. Box 295, CH-8058 Zurich-Airport, Switzerland
 Tel: +41 44 800 40 40, Fax: +41 44 800 40 50
 info.zurich@radissonblu.com
 radissonblu.com/hotel-zurichairport

WELCOME

Welcome to Zurich's only hotel with direct access to the airport terminals. This business and lifestyle hotel features avant-garde design and offers facilities unparalleled in Switzerland for conventions, conferences, one day events, receptions and gala dinners.

The atrium lobby, which is designed to serve as a central meeting place, features a unique 16-metre Wine Tower with flying 'Wine Angels', exceptional gastronomy facilities and unusual design elements.

Spanning an area of more than 3,720m², the Radisson Blu Airport Conference Center is Switzerland's most extensive range of facilities for business events. The infrastructure consists of a total of 46 multi-function meeting rooms ranging from the elegant board meeting room for two persons to the plenary hall for 550 participants.

ROOMS

The 330 guest rooms and suites decorated in the styles "at Home", "Fresh", "Chic" and "Charme", represent an exciting change from standard hotel rooms. Guests can experience all the comforts of an exceptional hotel, including flat-screen TV, free high-speed WLAN internet access and a safe large enough to accommodate a laptop and equipped with a power socket.

Exciting views of the Airport or the Wine Tower and high-quality materials and design elements by Matteo Thun, George Nelson, Cassina and the Castiglioni brothers make for an exceptional hotel room ambience. Quadruple glazing and soundproofed windows make it possible to spend some quiet and relaxing time while enjoying views of aircraft taking off.

Business class rooms also feature free services such as a TV entertainment programme, daily newspaper, Super Buffet Breakfast and a Nespresso coffee machine.

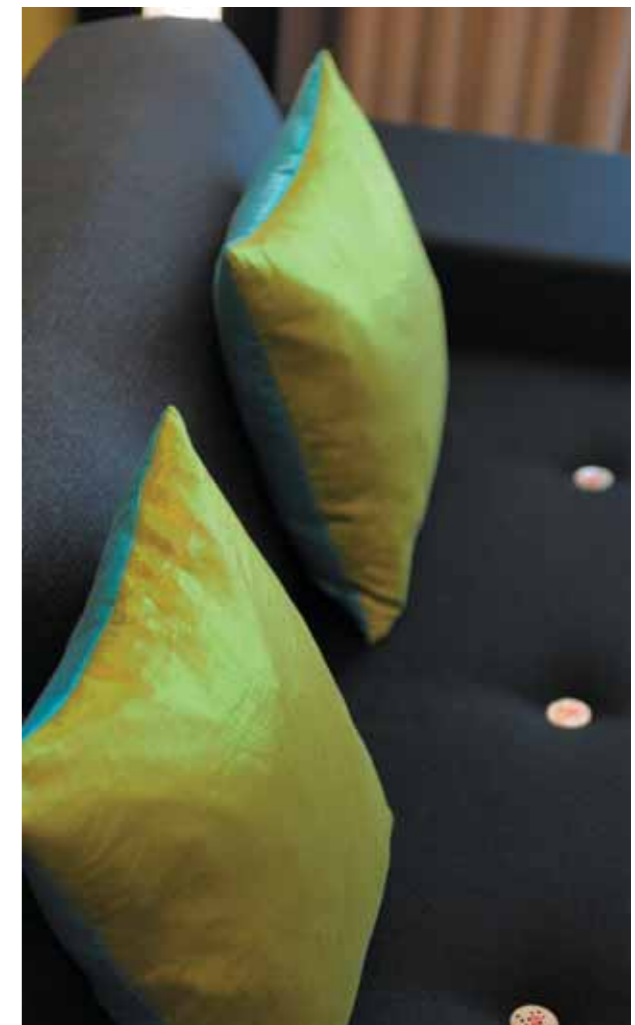
The PACE Fitness Club means you can enjoy physical exercise and relaxation around the clock. This 150m² club exclusively for hotel guests includes a sauna, steam bath, and a quiet room for relaxation. The fitness room offers fascinating views of the atrium and the Wine Tower, as well as fitness and stamina-building equipment.



RADISSON BLU DESIGN EXPERIENCES

Acrylic Glass Candle Holders, Atrium Lobby

Jacopo Foggini was born and grew up in Turin and began working with methacrylate and using its properties creatively in the Nineties. He was fascinated by its aesthetic qualities and unusual colours. One of his greatest achievements has been the opening of his own gallery in Milan. Three of his acrylic glass candle holders are located in the hotel's lobby area. Source: www.jacopofoggini.it



RADISSON BLU DESIGN EXPERIENCES

Arco Arc Lamp by Achille Castiglioni

The Castiglioni brothers have designed more than 60 lamps, but the ACRO arc lamp is probably the most famous. This lamp originated with a challenge to design a ceiling lamp which does not have to be screwed into the ceiling. The plant motto 'design requires observation' proved very apt, as a street light provided the inspiration for the lamp bracket. The base of the lamp is made of Carrara marble and the arc bracket of steel. The lamp is located in the Presidential Suite (Präsidentensuite).

RADISSON BLU AIRPORT CONFERENCE CENTER

The Radisson Blu Airport Conference Center spread over two floors and the "Zürich" events area offer extensive facilities for one-day and multi-day business events of every description, including 46 meeting rooms, 4 foyers, 3 lounges, 1 video conference room, guest offices, executive day rooms and two Business Services Centers.

goldpointsplus™

Earn Gold Points® for organising events at the Radisson Blu Hotel, Zurich Airport just register your meeting under your name and goldpoints plus membership card and reap the benefits. For more information please see goldpointsplus.com/planners

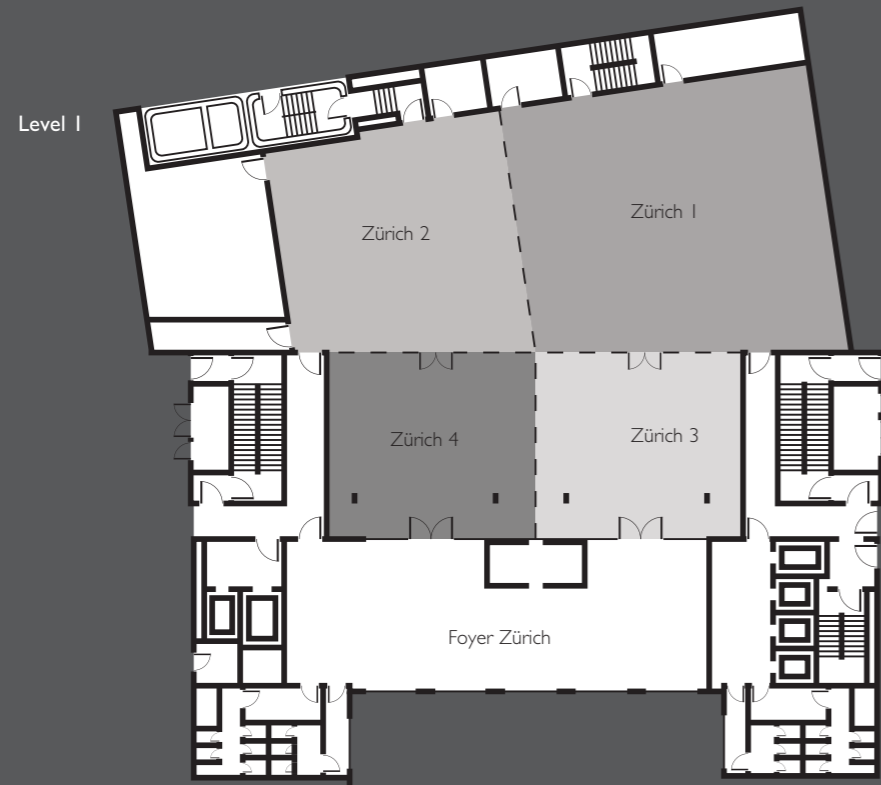
CONFERENCES AND MEETINGS (LEVEL 1 AND 7)

The Radisson Blu Airport Conference Center on the 7th floor accommodates up to 180 persons in 19 multi-function meeting rooms, each with daylight. In the central conference foyers, which feature live cooking stations, we will be pleased to provide light culinary highlights and a diverse programme of themed coffee breaks and business lunches.

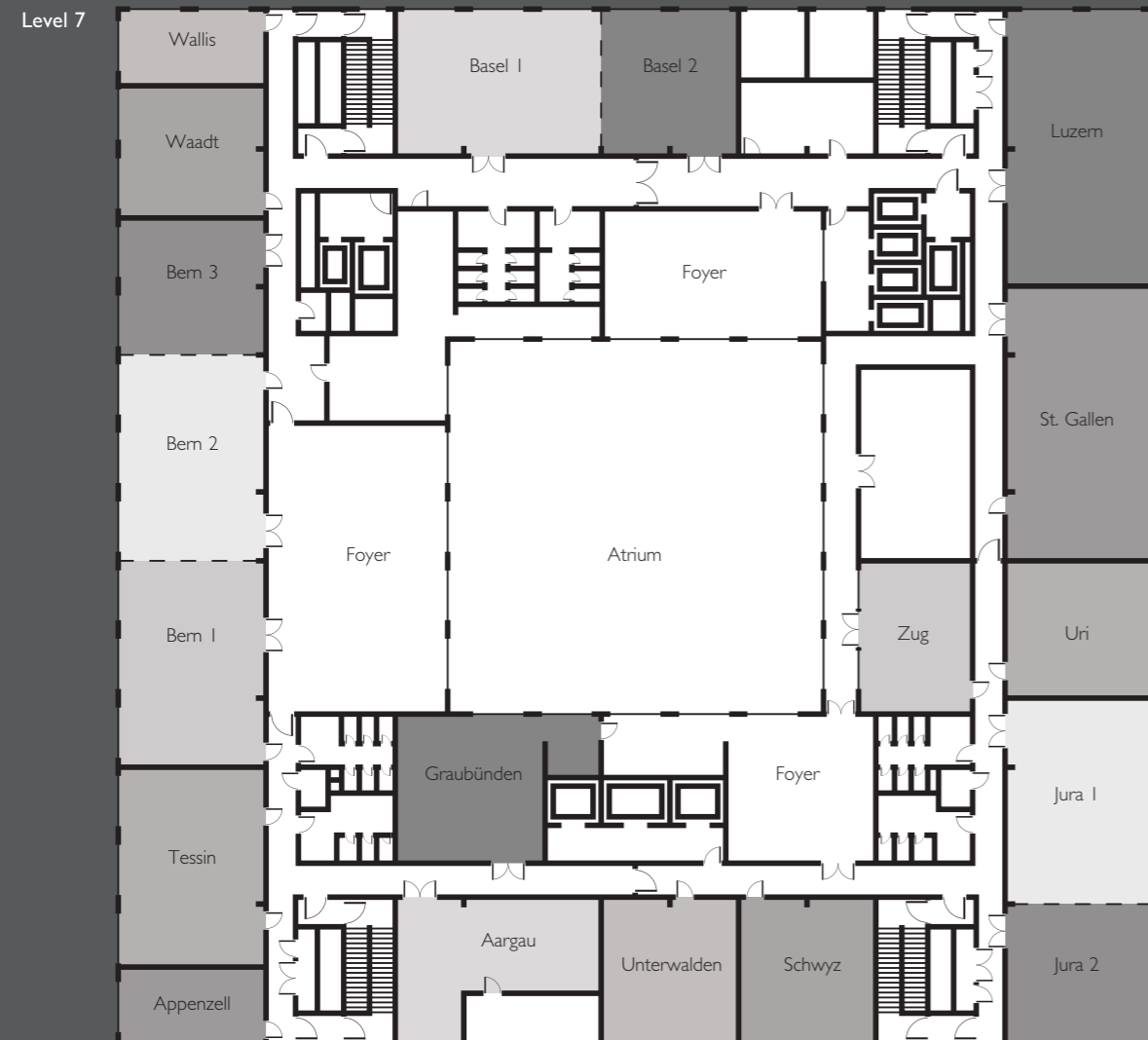
The 'Zürich' area on the first floor can be divided into four sections and spans 800m² including the foyer, providing space for conferences with up to 550 participants and celebratory banquets of up to 400 guests.

Our partner 'KFP Conference Service' offers comprehensive technical advice and on-the-spot support services from the basic set-up to extensive lighting, visual and sound effects for business events with added value.





LEVEL 1	Size in square metres	Width x Length	Height	Theater	Classroom	Cabaret	Bankett	U-shape	Boardroom	Cocktail	Natural light
Zürich 1	247	16,90 x 14,40	4,25	210	120	90	150	-	-	250	✓
Zürich 2	159	12,90 x 11,80	4,25	130	85	60	100	45	30	160	-
Zürich 3	107	11,20 x 9,90	4,25	80	45	30	50	50	34	100	-
Zürich 4	107	11,20 x 9,90	4,25	80	45	30	50	45	34	100	-
Zürich 1-4	620	29,70 x 22,80	4,25	550	300	200	400	30	-	600	-
Zürich 1+2	406	29,70 x 13,30	4,25	340	200	160	260	30	-	430	✓
Zürich 3+4	214	22,40 x 9,90	4,25	160	0	60	100	-	-	200	-
Zürich 1+3	354	14,00 x 24,30	4,25	300	190	100	220	-	-	370	-
Zürich 2+4	266	12,10 x 21,70	4,25	230	130	100	170	-	-	280	-
Zürich 1-4 + Foyer	800	29,70 x 38,30	4,25	-	-	-	500	-	-	600	✓
Foyer Zürich	180	22,40 x 7,70	4,25	-	-	-	-	-	-	160	✓



LEVEL 7	Size in square metres	Width x Length	Height	Theater	Classroom	Cabaret	Bankett	U-shape	Boardroom	Cocktail	Natural light
Luzern	116	7,80 x 14,90	2,55	95	65	45	80	35	41	115	✓
St. Gallen	115	7,80 x 14,80	2,55	95	65	45	80	35	41	115	✓
Uri	57	7,80 x 7,30	2,55	48	26	20	30	20	19	60	✓
Zug	49	6,00 x 8,20	2,55	40	30	15	20	18	18	50	-
Jura 1	87	7,80 x 11,10	2,55	80	50	35	60	30	30	90	✓
Jura 2	58	7,80 x 7,40	2,55	48	30	20	45	18	15	60	✓
Schwyz	58	7,30 x 7,90	2,55	48	30	20	45	20	19	60	✓
Unterwalden	58	7,30 x 7,90	2,55	48	30	20	45	20	19	60	✓
Graubünden	64	8,00 x 8,00	2,55	55	35	20	45	22	19	65	✓
Aargau	54	11,10 x 4,90	2,55	45	26	20	30	20	19	55	✓
Appenzell	32	7,90 x 4,00	2,55	-	15	-	-	10	10	30	✓
Tessin	85	7,90 x 10,80	2,55	80	50	35	60	30	30	90	✓
Bern 1	88	7,90 x 11,10	2,55	80	55	35	60	30	34	90	✓
Bern 2	88	7,90 x 11,10	2,55	80	55	35	60	30	34	90	✓
Bern 3	58	7,90 x 7,30	2,55	48	30	20	45	20	19	60	✓
Waadt	55	7,90 x 7,00	2,55	45	26	20	40	18	18	55	✓
Wallis	32	7,90 x 4,00	2,55	-	15	-	-	10	10	30	✓
Basel 1	88	11,10 x 7,90	2,55	80	55	35	60	30	34	90	✓
Basel 2	58	7,30 x 7,90	2,55	48	30	20	45	20	19	60	✓
Jura 1+2	145	7,80 x 18,50	2,55	100	75	60	100	45	40	150	✓
Bern 1+2	176	7,90 x 22,20	2,55	120	75	72	100	50	-	180	✓
Bern 2+3	146	7,90 x 18,40	2,55	100	75	60	100	45	40	150	✓
Bern 1-3	234	7,90 x 29,50	2,55	180	110	80	150	50	-	245	✓
Basel 1+2	146	18,40 x 7,90	2,55	100	75	60	100	45	40	150	✓



BOARD MEETINGS (LEVEL 8)

From May 2009, a unique range of facilities specially designed for small-scale meetings, including 23 board meeting rooms for 2-18 persons, a fully equipped video conference room, business lounges, guest offices, executive day rooms and a Business Services Center, will be available on the 8th floor.



LEVEL 8	Size in square metres	Width x Length	Height	Maximum persons for Boardroom
Copenhagen	22	3,7 x 5,9	2,6	8
Belgrade	22	3,7 x 5,9	2,6	8
Geneva	22	3,7 x 5,9	2,6	8
Frankfurt	22	3,8 x 5,9	2,6	8
Paris	22	3,8 x 5,9	2,6	8
Vienna	23	3,7 x 6,1	2,6	8
Istanbul	29	3,6 x 7,9	2,6	12
Madrid	29	3,6 x 7,9	2,6	12
Lisbon	29	3,7 x 7,9	2,6	12
Oslo	29	3,7 x 7,9	2,6	12
Venice	29	3,7 x 7,9	2,6	12
Thessaloniki	29	3,7 x 7,9	2,6	12
Barcelona	29	3,7 x 7,9	2,6	12
Rome	29	3,6 x 8,2	2,6	12
Stockholm	29	3,6 x 8,2	2,6	12
Amsterdam	30	3,8 x 7,9	2,6	12
London	30	3,7 x 8,2	2,6	12
Moscow	30	3,8 x 7,9	2,6	12
Brussels	35	4,3 x 8,2	2,6	10
Prezone Brussels	22	6,7 x 3,3	2,6	10
Berlin	61	7,6 x 7,9	2,6	18
Prezone Berlin	22	3,7 x 5,9	2,6	
Dublin	61	7,7 x 7,9	2,6	18
Prezone Dublin	29	3,6 x 7,9	2,6	
Milan	61	7,7 x 7,9	2,6	18
Prezone Milan	29	3,6 x 7,9	2,6	
Athen	66	8,0 x 8,2	2,6	18
Prezone Athen	10	2,9 x 3,3	2,6	
Video Conferencing	22	3,7 x 6,1	2,6	6
Klotten Lounge	70	8,0 x 8,75	2,6	
Airfield Lounge	57	5,0 x 11,4	2,6	
Atrium Lounge	38	8,1 x 4,6	2,6	
Guest Office 01	22	5,9 x 3,6	2,6	
Guest Office 02	22	5,9 x 3,6	2,6	
Guest Office 03	22	5,9 x 3,7	2,6	
Day Room 01	30	8,2 x 3,7	2,6	1
Day Room 02	30	8,2 x 3,7	2,6	1
Shower Rooms	37	4,2 x 8,2	2,6	3 x 1

WORLD OF GASTRONOMY

Guests can experience spectacular restaurant facilities in the atrium lobby area. The ambience of the Filini Restaurant is the result of Bisazza mosaic, retro-design, and a photo gallery over one whole wall, as well as of modern interpretations of classic Italian dishes. The Super Buffet Breakfast features more than 120 different products for that most important meal of the day.

Are you looking for something really special? The angels' wine tower grill is an impressive venue overlooking the Wine Tower with its Wine Angels, a menu focusing on premium meat and fish dishes, and a modern "Alpine Chick" atmosphere. A separate area provides the perfect venue for events for up to 12 persons.



RADISSON BLU DESIGN EXPERIENCES

Mirror Ball Lamps by Tom Dixon, Filini Restaurant

These lamps are blown like chewing gum into a form, and the plastic sleeve is then metalised on the inside. The chrome metal on the outside has the advantage that it also reflects light, thus intensifying the effect of the material on the inside. Dixon drew his inspiration for these lamps from astronauts' helmets.

ANGELS' WINE TOWER

The centrepiece of the spacious Atrium Lobby is the 16-metre glass Wine Tower, which houses around 4,000 bottles of wine and Champagne at ideal temperatures. Our Wine Angels will be pleased to fly an exclusive performance for your cocktail party. They will amaze you with their unique wine service and regular performances every day at lunch time and until 11 p.m. in the evenings.

